



Stanley Museum of Art

University of Iowa
160 W. Burlington St.
Iowa City, Iowa 52242
stanleymuseum.uiowa.edu

NEWS RELEASE

Contact: Mahvish Farid
Communications and Marketing
Coordinator
mahvish-farid-1@uiowa.edu

Stanley Museum of Art Acquires Pioneering Digital Art Collection

Iowa City, Iowa – The University of Iowa Stanley Museum of Art is thrilled to announce the acquisition of 35 significant works from the *Digital Atelier*. This groundbreaking collection, “Work from the Digital Art Studio,” documents the genesis of digital mixed media art from 1994 to 2004, a time when affordable digital tools for artists were scarce.

The *Digital Atelier*, a collaborative effort between Dorothy Simpson Krause, Bonny Pierce Lhotka, and Karin Schminke, pioneered the integration of digital technologies with traditional art materials. Their innovative approach and experimentation have significantly influenced the field of digital art.

The acquired collection showcases the artists' exploration of various techniques, including inkjet printing, digital imaging, and traditional media like painting, collage, and printmaking. The artworks, often printed on unconventional surfaces such as plywood, fabric, and rusty metal, highlight the unique aesthetic possibilities offered by digital technology.

The Stanley Museum of Art plans to exhibit the *Digital Atelier* collection periodically and incorporate it into educational programs, providing students and the public with the opportunity to explore the evolution of digital art.

I am delighted to celebrate the gift of these works from the *Digital Atelier*. They demonstrate the vision, technical ingenuity, and collaborative spirit of Dorothy Simpson Krause, Bonny Pierce Lhotka, and Karin Schminke—three artists who, together, propelled the early evolution of digital mixed media art. Schminke’s ties to the University of Iowa make this body of work especially meaningful, as it both honors the innovative legacy of an Iowa alumna and supports the university’s educational mission. Students and scholars across disciplines—from the arts and humanities to engineering and the sciences—will find these artworks invaluable as teaching tools, sparking new ideas about the intersections of fine art, technology, and creative problem solving. (Lauren Lessing, Director of the Stanley Museum of Art)

We each made distinctive work that showcased the potential of combining traditional and digital media and we complimented each other in our organizational skills. More importantly, we had a passion for what we did. (Bonny Pierce Lhotka)

The Stanley Museum of Art, with both strong art and educational components, is the ideal institution for continuing to share the historical trajectory this work represents. We look forward to being a part of those efforts. (Dorothy Simpson Krause)

Discovering the University of Iowa's Museum of Art as an undergraduate was a transformative experience. The opportunity to study the works in the Museum's collection inspired and guided me in countless ways. Revisiting the collection in later years reinforced the impact this collection has had upon my career. To now have my art in the Stanley Museum of Art's collection with those works is incredibly meaningful to me. (Karin Schminke)

###

About Digital Atelier

The story of the collaboration between Dorothy Simpson Krause, Bonny Pierce Lhotka and Karin Schminke began when they met at a workshop in early 1994. With a shared desire to add digital tools to their studios, they began working collectively as the *Digital Atelier* to develop the connections with industry that would position them to encourage and promote new developments in this field. The three artists also shared a love of rich surfaces in their 2D works, so integrating traditional artists materials was an important part of their process experimentations.

Known for their experiments combining traditional studio and media techniques with digital imaging, they continue to produce original fine art and editions using the latest technologies including UV cured flatbed printers, laser engravers and imaging hardware and software. The traditional media they employ includes painting, collage, image transfer/monotype and prints on surfaces as diverse as plywood, fabric, rusty metal and handmade substrates. *Digital Atelier's* work is widely exhibited both nationally and internationally and can be found in various corporate and museum collections including the permanent collection of the Smithsonian American Art Museum.

For more information on the artists, visit:

<http://www.dotkrause.com>

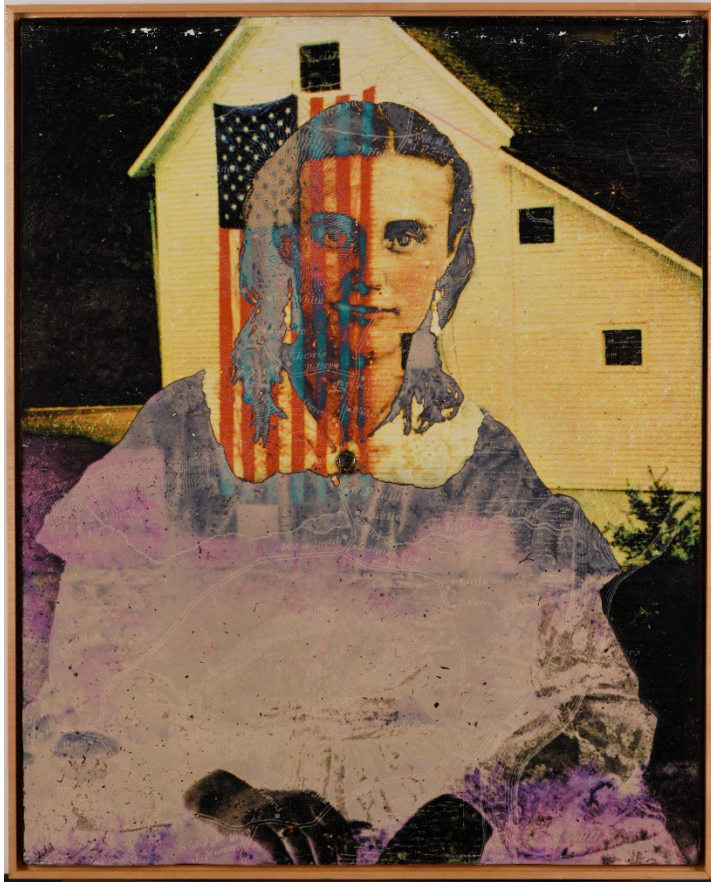
<http://www.schminke.com>

<http://www.Lhotka.com>

About the University of Iowa Stanley Museum of Art

The University of Iowa Stanley Museum of Art is a leading university art museum that serves as a focal point for members of the public as well as a multi-disciplinary tool and creative hub for students across campus. The Stanley has one of the most important university-owned art collections in the country, including significant holdings of African art, 20th-century painting and sculpture, works on paper, textiles, and ceramics. Their world-class collection began with acquisitions made in the 1930s to support the nation's first Master of Fine Arts program. The collection continued to evolve as generations of UI faculty and students, including Grant Wood, Elizabeth Catlett, Miriam Schapiro, Philip Guston, and Ana Mendieta, shaped the field of American art.

For more information, visit stanleymuseum.uiowa.edu/digital-atelier



Dorothy Simpson Krause

Independence Day

1999

Inkjet print on canvas

Gift of the Digital Atelier

University of Iowa Stanley Museum of Art

2023.77



Dorothy Simpson Krause

Signs of Wanderlust

1999

Inkjet print on canvas with abraded edges

rubbed with creamy wax medium

Gift of the Digital Atelier

University of Iowa Stanley Museum of Art

2023.76



Karin Schminke

Galiano

1998

Paint and rice paper layered between a
transferred image and an inkjet print

Gift of the Digital Atelier

University of Iowa Stanley Museum of Art
2023.91



Karin Schminke

Fragments: Early Morning

1998

Inkjet printed in layers above and below
collaged rice paper

Gift of the Digital Atelier

University of Iowa Stanley Museum of Art
2023.92



Bonny Pierce Lhotka

Lily

2006

Inkjet transfer to gelatin fresco

Gift of the Digital Atelier

University of Iowa Stanley Museum of Art

2023.107



Bonny Pierce Lhotka

Teatime Ladies

2000

Inkjet transfer to fresco with found
tablecloth

Gift of the Digital Atelier

University of Iowa Stanley Museum of Art

2023.99

Images are for promotional use only in connection with the *Digital Atelier* collection at the Stanley Museum of Art. All reproductions must include the full caption information displayed next to the corresponding image. Images cannot be cropped, altered or overlaid with any text. For high-resolution images, contact [Mahvish Farid](#).